

Bogs #321 + #365

280-89

Beaverkill Range with Will Nixon 10/26/09

site	p	Ap	De	e scale	e map	time	R
(A) parking area Wild Meadow Road	29.10	0.00	0	$R_1=1.000$	2580	±10:00 11:00	$R_1 = \frac{3360' - 2580'}{29.10'' - 28.32''} = \frac{780'}{0.78''} = 1000'$
(B) Fall Brook lean-to	29.03	0.07	70	2650	2620	11:00?	
(C) Two 26" ASH	28.91	0.19	190	2770		11:14	
(D) Top steep ledges	28.67	0.43	430	3010		11:30	
(E) skid road on terrace	28.58	0.52	520	3100	$e\#599$	11:39	
(F) upper skid road	28.48	0.62	620	3200			
(G) switchback	28.43	0.67	670	3250			
(H) Bog #321; Summit	28.32	0.78	780	3360		12:15	$R_2 = \frac{3360' - 2580'}{29.07'' - 28.32''} = \frac{780'}{0.75''} = 1040'$
(I) S of 3360'	28.32	0.75	780		3360	2:00	
(J) 90° bend on skid rd.	28.46	0.61	634	3214		2:12	
(K) skid road down to NE	28.52	0.55	572	3152			
(L) begin steep ^{down}	28.62	0.45	468	3048	$e\#128$ moved		
(M) ASH	28.87	0.20	208	2788			
(N) on trail in col	29.02	0.05	52	2632	2660	2:55	
(O) BM 2653, leave	29.02	0.05	52	2632	2653	3:45	
(P) Lean to	29.02	0.05	52	2632	2620	3:57*	
(A) parking area	29.07	0.00	0	-	2580	5:02	

Private tract has recently been logged ^{again} with new network of skid roads not present in 1997 (see p. 280-22). At (J), a BC stump had 3 years of growth - 2009, 2008 & 2007. ∴ logged 2006, maybe 2005. Stumps fresh.

Old entry point #128 of 1997 at 2767' must be moved ^{up} to above the ledges at 3048' from (U) 2767' of 1997 (p. 280-22). The whole col below is in 1°. Only the private tract is not.

Parking area is 34.5 miles from 2810.

* Wet spot on E at 4:12 PM; not a bog. Another on W where trail is double

(C) Two 26" ASH need to a rill.
Big BC+SUB to 24"t.
Allium in fruit.

(D) \$camyl-abun atop ledger.

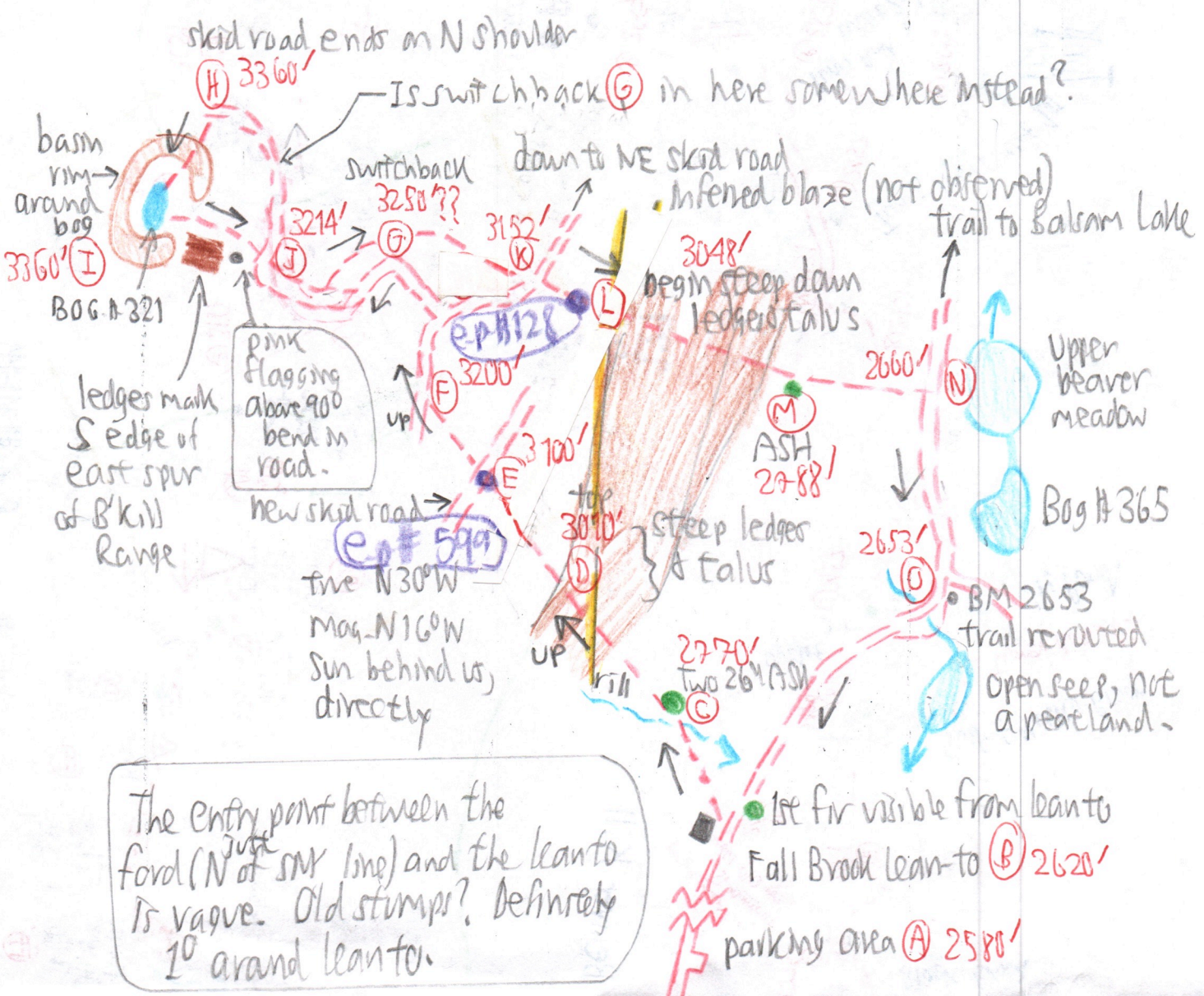
(I) Bog #321. Approach from N
dam 10' rim. FIR only in
+ around immediately the bog.
Mat need to pool has 3 heathr.
Vacc oxy, Chamaedaphnet K poli.

See Bog #321 ^{file} for
pH, area, temperature
oxygen.

See Bog #365 file for dimensions

No blazes observed in 2009. SMY line ^{if} inferred on this sketch.

The two lower wetlands from 1973 to 1997 were not observed, probably bypassed on the north on descent, elev. 3059 (W) & 3096 (X) of 1997.



The entry point between the ford (N of ^{just} SMY line) and the lean-to is vague. Old stumps? Definitely 10' around lean-to.